



Our brand new FAZE FLOW TOP is a high quality, flexible extruded silicone strip. It is ideal for use along ceilings, walls, cabinetry & stairways; both indoors and outdoors. This strip will ensure a seamless combination of style and functionality to any project!

FEATURES

- + Top emitting light direction, for applications requiring direct light.
- + UV & chemical resistant
- + Precise cutting options
- + High CRI - excellent colour rendering
- + Compatible with Casambi devices
- + IP67 - suitable for outdoor applications
- + Front, side and bottom cable entry connection options



GENERAL SPECIFICATIONS

LED	10W p/m 24V DC
Lumens	607 lm p/m (3000K & 4000K)
Efficacy	60 lm/w (3000K & 4000K)
Colour Temperature	<input type="checkbox"/> 3000K, Warm White <input type="checkbox"/> 4000K, Cool White
Material	Extruded Silicone
Finish	White
Beam	120°
CRI	92+
IP	67
Colour Deviation	SDCM ≤2
Lifetime	>54,000hrs L70 B10
Warranty	5 Years

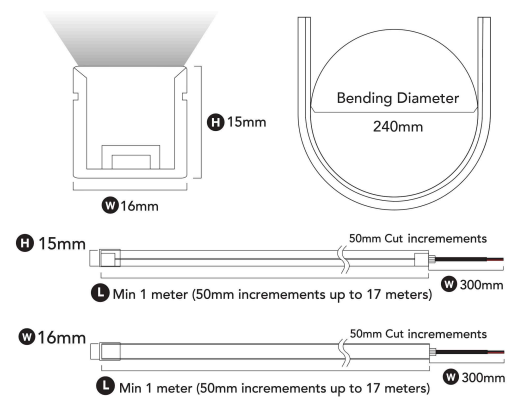
PROJECT DETAILS

PROJECT:

TYPE:

NOTES:

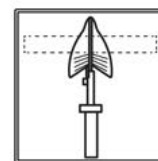
DIMENSIONS (mm)



PRODUCT CODE

3000K	10-FL1615T103
4000K	10-FL1615T104

CUTTING LENGTHS



50mm increments up until 17m

*Please allow 9mm extra on each side for the end caps

COMPATIBLE CASAMBI DEVICES

BasicDIM 24V Wireless 4ch	71-CAS24V
BasicDIM Driver 24V 150W	71-CAS24V150
BasicDIM Driver 24V 100W	71-CAS24V100
BasicDIM Driver 24V 60W	71-CAS24V60
BasicDIM Driver 24V 35W	71-CAS24V35

FLOW TOP ACCESSORIES



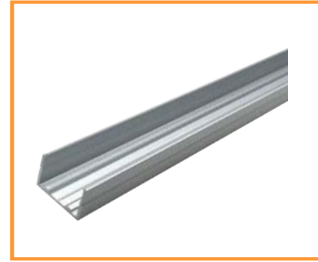
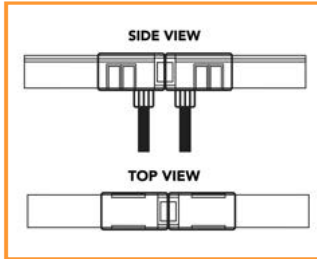
SIDE CABLE ENTRY

Code: 10-FL1615PSE

Dimensions: 27.9 (L) x 20.4 (W) x 19.4 (H) mm

Finish: Transparent

Cable Entry: Side

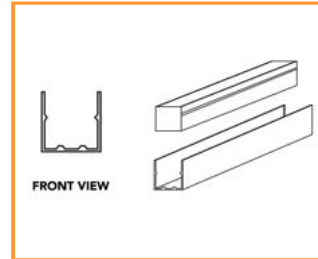


ALUMINIUM PROFILE

Code: 10-FL1615P1

Dimensions: 1000 (L) x 20.5 (W) x 17.6 (H) mm

Material: Aluminium



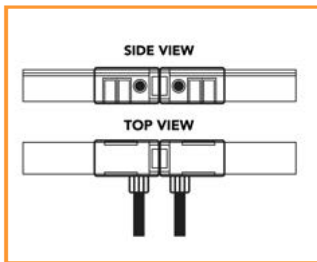
REAR CABLE ENTRY

Code: 10-FL1615PRE

Dimensions: 27.9 (L) x 20.4 (W) x 19.4 (H) mm

Finish: Transparent

Cable Entry: Bottom



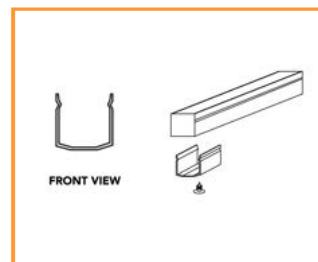
MOUNTING CLIPS (set of 2)

Code: 10-FL1615MC

Dimensions: 20 (L) x 16.6 (W) x 12.4 (H) mm

Material: Stainless Steel

Each meter requires 2x clips and 2x screws



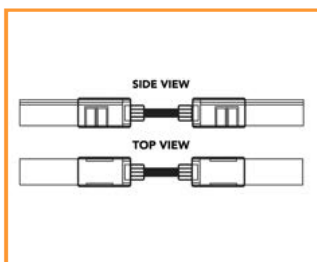
STRAIGHT CABLE ENTRY

Code: 10-FL1615PFE

Dimensions: 27.9 (L) x 20.4 (W) x 19.4 (H) mm

Finish: Transparent

Cable Entry: Front



END CAP IP67

Code: 10-FL1615EC

Dimensions: 27.9 (L) x 20.4 (W) x 19.4 (H) mm

Material: Stainless Steel

