



PROJECT:

TYPE:

NOTES:

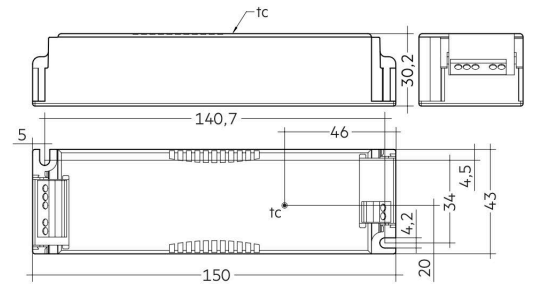
Dimmable 24 V constant voltage LED Driver for flexible constant voltage strips up to 35W



FEATURES

- + Can be either used built-in or independent with clip-on strain-relief
- + No need for an external gateway device
- + basicDIM Wireless enables different dimming options
- + Forms automatically a wireless communication network with up to 250 nodes
- + Dimming range 1 to 100%
- + No additional external dimmer is needed
- + Can control up to 35W

DIMENSIONS (mm)



GENERAL SPECIFICATIONS

Product Code	71-CAS24V35
Rated Supply Voltage	220 - 240 V
AC Voltage Range	198 – 264 V
DC Voltage Range	176 – 280 V
Max. Power Control	35W
Mains Frequency	0 / 50 / 60 Hz
Dimming Range	1 - 100%
IP	20
Dimensions	195 x 43 x 30.2 mm
Lifetime	Up to 50,000hrs
Warranty	5 Years

COMPATIBLE FITTINGS

FAZE

- | | |
|---------------------|---------------|
| LED Strip COB 360 | Flow Side 5W |
| LED Strip 176 | Flow Side 10W |
| LED Strip 120 (10m) | Flow Top 5W |
| LED Strip 112 | FlowTop 10W |
| LED Strip 60 (10m) | |
| LED Strip 60 | |
| LED Strip 30 | |

LINILED

- Top Diffuse 18
- Top Diffuse 12
- Side Diffuse
- Top Power
- Side Power
- Top Power Short Pitch
- Side Power Short Pitch
- Top Deco
- Side Deco
- Aeris 30
- Aeris 20

