

F A Z E

2021/22 TRACK COLLECTION



Track Lights

Track lighting allows for versatility and flexibility, the systems are made up of light fixtures attached anywhere along a continuous track that contains electrical conductors. This allows you to change or reposition any and all fixtures, even after installation. As track lighting is extremely controlled, it provides an ideal solution for accent lighting in both residential and commercial spaces.

Contents

- 4 Our Track Collection Key Features
- 5 3 Circuit Track Specifications
- 6 Track Components
- 7 Track Layouts and Connections
- 19 Track Collection Specifications

Product Contents



Core 70 Track	10
Specifications	19



Core 95 Track	10
Specifications	19



Core 95 Plus Track	10
Specifications	20



Core Suspension Track	14
Specifications	20



Vita Track	16
Specifications	21

3 Circuit Track

Three circuit track utilises 3 live copper conductors that allow 3 lighting circuits to be individually dimmed or switched on or off. When a track light is installed, it can be assigned to 1 of the 3 circuits via a dial.

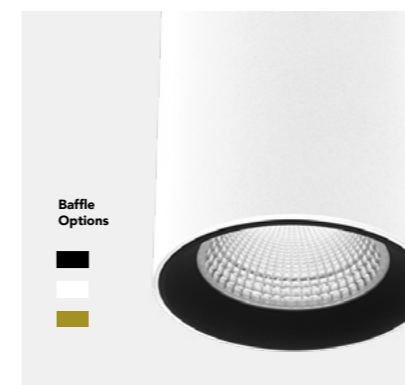


Our Track Collection Key Features



Ergonomic Designs

Each of our track fittings have been designed to be as functional and versatile as possible. With fittings that include a 350° rotation and a 90° tilt, as well as a suspension option for a more decorative aesthetic.



Customisation

This collection has a range of customisation options, including various body, baffle and fascia finishes; as well as numerous beam angles and the added option of a honeycomb lens.



CRI 90+

A high CRI is crucial when designing any lighting plan, from residential to commercial, as it will ensure that all of the architectural features in your space are enhanced exceptionally. The 90+ CRI of our track lighting collection is a perfect example of this as they will enhance details in stone counter tops, the rich colouring of hardwood floors and everything in between.

The Faze Track Lighting Experience

As we have improved our collection, we have also improved the experience in which you select your track lighting components and fittings. This catalogue includes a user friendly selection guide that has all of your track options, components and fittings in one place. We have also included design ideas and inspiration, as well as a configuration guide to help ensure your track lighting is of the highest calibre in your next project.

Latest in Track Lighting Technology

Staying current with the latest in lighting technology, our track lighting systems are the latest from the Global 3 Circuit Track range.

3 Circuit Track Specifications

Use the following guide to assist in selecting the correct length of track you will require, as well as understanding load-bearing and mounting information.

Measurements and Specifications

Dimensions

3 Circuit Track Dimensions
Height 32.5mm
Width 31.5mm
Length 1000mm and 2000mm available.

3 Circuit Recessed Track Dimensions
Height 32.5mm
Width 56mm
Length 1000mm and 2000mm available.

Mounting Guide

L (mm)	a (mm)	b (mm)
1000	250	
2000	250	1000

Load Bearing Guide
(Suspended Track)

If you place a wire suspension every meter as recommended, you can attach **25kg** to a meter of conductor rail and single weights up to **5kg**. If you only install a wire suspension every 2 meters, you may only attach **10kg** and single weights of only up to **1kg**.

Load Bearing Guide
(Mounted Track)

When using surface mounted track you can attach up to **20kg**. However this will also depend on the ceiling type and the number and quality of screws fastening the track to the ceiling.

Finishes

☐ White

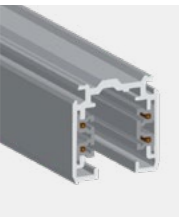
☒ Black

Design Recommendations

Application Method	Reason for this application
Commercial lighting	Track lighting is a great way to light a commercial project, with one system carrying multiple fittings.
Retail lighting	Track lighting is a versatile option for retail lighting. Whether it's to showcase individual products, or to illuminate an entire store front. The ability to individually adjust each light fitting on the track system makes it a great option for shop owners and retail managers to adjust their lighting as often as required.
Residential lighting	Track can be an ideal option for dining room lighting. As well as complementing industrial style apartments, track lighting can be a modern option for new residential projects.

Quality System

We are always researching to stay up to date with current lighting technology. Because of this, the Global 3 Circuit Track system is unparalleled.



High Quality Aluminium Body and Construction

The Global 3 Circuit Track system is constructed with aluminium and features nickel plated copper leads, this ensures maximum protection against oxidation.



Easily operated system, with complete control

The 3 Circuit Global Track makes it easy to adjust all aspects of your lighting set-up, with the ability to individually move and slide your fittings, as well as the option of 3 power settings.



Range of Components for Various Layouts

The 3 Circuit Global Track incorporates a wide range of components, options for various layouts, as well as the option to suspend your track via the wire suspension kit.

Track Components

Use the following guide to assist in selecting the correct components to build your track lighting design.

Component	Diagram	Description	Finishes	Product Code
3 Circuit Track Piece		3 circuit track, available in 1m or 2m lengths.	<input type="checkbox"/> 1m, White	83-3C1MW
			<input checked="" type="checkbox"/> 1m, Black	83-3C1MB
			<input type="checkbox"/> 2m, White	83-3C2MW
			<input checked="" type="checkbox"/> 2m, Black	83-3C2MB
3 Circuit Recessed Track Piece		3 circuit recessed track, available in 1m or 2m lengths.	<input type="checkbox"/> 1m, White	83-3CR1MW
			<input checked="" type="checkbox"/> 1m, Black	83-3CR1MB
			<input type="checkbox"/> 2m, White	83-3CR2MW
			<input checked="" type="checkbox"/> 2m, Black	83-3CR2MB
Feed Piece		The feed piece connects at the start of the track and supplies power to the entire track configuration.	<input type="checkbox"/> White	83-3CFPW
			<input checked="" type="checkbox"/> Black	83-3CFPB
Dead End		The dead end connects at the end of the track and completes the track with a clean finish.	<input type="checkbox"/> White	83-3CDEW
			<input checked="" type="checkbox"/> Black	83-3CDEB
Straight Connector		The straight connector joins two separate pieces of track together.	<input type="checkbox"/> White	83-3CSCW
			<input checked="" type="checkbox"/> Black	83-3CSCB
		The straight connector feed connects in the middle of two track pieces and supplies power to the entire track configuration. You can use a straight connector feed instead of a regular feed piece.	<input type="checkbox"/> White	83-3CSFW
			<input checked="" type="checkbox"/> Black	83-3CSFB
Corner Connector		The corner connector is used to connect two pieces of track in a corner configuration. These pieces are available in both right and left. A corner connector also provides power to the track.	<input type="checkbox"/> Left, White	83-3CLCW
			<input type="checkbox"/> Right, White	83-3CRCW
			<input checked="" type="checkbox"/> Left, Black	83-3CLCB
			<input checked="" type="checkbox"/> Right, Black	83-3CRCB
T Connector		The T connector is used to connect three pieces of track in a T configuration. A T connector also supplies power to the track.	<input type="checkbox"/> White	83-3CTCW
			<input checked="" type="checkbox"/> Black	83-3CTCB
Cross Connector		The cross connector is used to connect four pieces of track in a cross configuration. The cross connector also supplies power to the track.	<input type="checkbox"/> White	83-3CCCW
			<input checked="" type="checkbox"/> Black	83-3CCCB
Adaptor		The adaptor is a clip-in component which comes as standard on every Faze track fitting. The adaptor is used to connect the luminaire to the track. The adaptor can carry fittings of 5kg or less.	<input type="checkbox"/> White	N/A
			<input checked="" type="checkbox"/> Black	Pre-assembled on fitting.
Wire Suspension Kit		The wire suspension kit is used to suspend the track configuration.	<input type="checkbox"/> White	83-3CWSUPW
			<input checked="" type="checkbox"/> Black	83-3CWSUPB
Universal Fixing Piece		A universal fixing piece can be used to mount the track in a fixed position.	<input type="checkbox"/> White	83-3CUFW
			<input checked="" type="checkbox"/> Black	83-3CUFB

Please note:
3 circuit recessed track is configured using the same components as the standard 3 circuit track. However in addition to this, cover plates are required. Please get in touch with one of our design consultants for more information.



Track Layout and Connections

Use the following guide to assist in the construction of your track lighting design. You must ensure all track layouts include a power feed.

Notes when constructing a track system

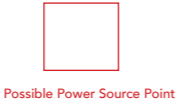
- 1

Never supply power to the track system in multiple locations.
Only use 1 power supply location.
- 2

Make sure the track system is straight both vertically and horizontally before powering on.
- 3

The power supply on-site will determine which accessory is best to use and which location is appropriate for the power source.
- 4

Regardless of your track lighting design, 1 point of power source is required.



Possible Power Source Point

This indicates that a Feed Piece or Connector can be used at this point as the power source to the track.

Configuration One - Straight Configuration

Variant Number	Configuration Components	Configuration Diagram
One	Feed Piece Dead End Track Piece	
Two	Straight Connector Feed Dead End x2 Track Piece x 2	
Three	Feed Piece Straight Connector Dead End Track Piece x 2	

Configuration Two - L Configuration

Configuration Components	Configuration Diagram
Feed Piece (Can be substituted with a Dead End) Dead End (Can be substituted with a Feed Piece) Corner Connector Track Piece	

Configuration Three - T Configuration

Configuration Components	Configuration Diagram
Feed Piece (Can be substituted with a Dead End) Dead End (Can be substituted with a Feed Piece) T Connector Track Piece	

Configuration Four - H Configuration

Configuration Components	Configuration Diagram
Feed Piece (Can be substituted with a Dead End) Dead End (Can be substituted with a Feed Piece) T Connector Track Piece	

Configuration Five - Cross Configuration

Configuration Components	Configuration Diagram
Feed Piece (Can be substituted with a Dead End) Dead End (Can be substituted with a Feed Piece) Cross Connector Track Piece	



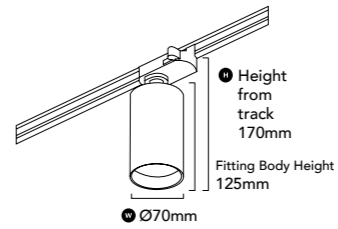


Core Track

Minimal, functional and versatile. The Core Track provides an ideal solution for accent lighting in both residential and commercial spaces. Available in 4 variants, there is an ideal option to suit any space.



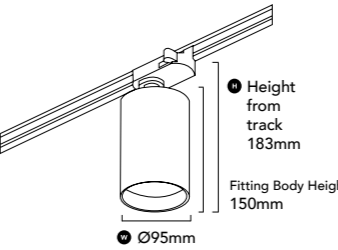
Core 70 Track



LED 15W
Lumens 1300 lm (3000K)
1420 lm (4000K)



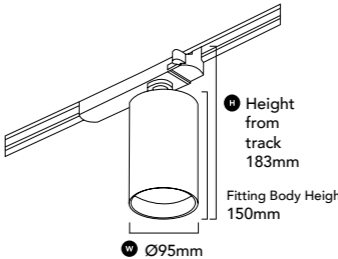
Core 95 Track



LED 20W
Lumens 1850 lm (3000K)
1920 lm (4000K)



Core 95 Plus Track



LED 30W
Lumens 2700 lm (3000K)
2830 lm (4000K)

Off-set Hinge Design

Featuring an off-set hinge design for improved balance, the Core Track series can tilt up to 90° and rotate up to 350°.



Built in Driver

The Core Track features a built in dimmable driver, making it simple to install, whilst still complementing the final product.

Sleek Canopy and Concealed Technology

The Core Track features a concealed, sleek canopy design. Ensuring a clean look whilst still maintaining effective heat dissipation and safe housing of all components within the fitting.

Slim, Modern Design

The Core Track was designed with a modern aesthetic in mind. Which resulted in a slim and minimal design.

Core 70 and 95 Track Beam Options

Beam

60°

Additional Reflector Options

15°

24°

36°

Lens Options

Honeycomb Lens

Baffle Options

Powder Coated Black (Standard)

Powder Coated White

Powder Coated Gold

CRI 92+

Casambi Bluetooth Compatible

DIMMABLE

* Excludes Core 95 Plus Track

* Excludes Core 95 Plus Track



Core 70 Track

LED	15W
Lumens	1300 lm (3000K) 1420 lm (4000K)

Core 95 Track

LED	20W
Lumens	1850 lm (3000K) 1920 lm (4000K)

Core 95 Plus Track

LED	30W
Lumens	2700 lm (3000K) 2830 lm (4000K)

Available in 3 outputs and 2 Finishes

Available in 3 outputs and 2 finishes, the Core Track provides options that cater to any space, whether that be residential or commercial.



Finishes	Powder Coated Black
	Powder Coated White

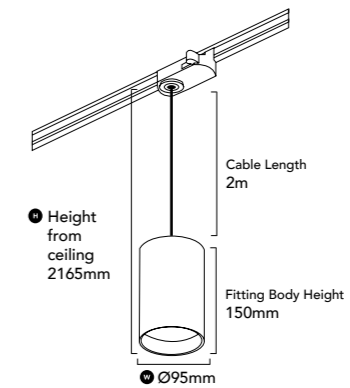


Core Suspension Track

The Core Suspension track provides yet another alternative to our track collection. The Core Suspension Track is a shorter, yet wider fitting compared to others in our range; providing an exceptionally high lumen output.



Core Suspension Track

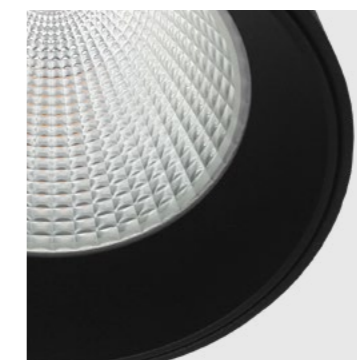


LED	12W
Lumens	1015 lm (3000K) 1090 lm (4000K)
Cable	All lengths come with a 2m cable.



Built in Dimmable Flicker Free Driver

The Core Suspension features a built in phase cut dimmable driver, for ease of installation and a seamless design.



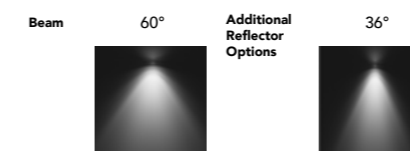
Refined Black Baffle

A slim black baffle design, for visual comfort and reduced glare.



High Quality Reflector

For better light distribution and performance.



Product Specifications page 20

Baffle Options	<div> <div></div> Powder Coated Black (Standard) </div> <div> <div></div> Powder Coated White </div> <div> <div></div> Powder Coated Gold </div>	Finishes	<div> <div></div> Powder Coated Black </div> <div> <div></div> Powder Coated White </div>
-----------------------	--	-----------------	---



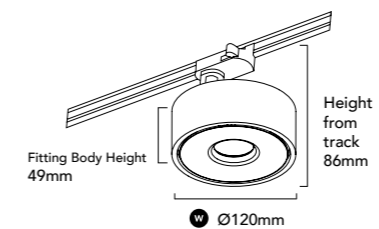


Vita Track

The Vita Track operates on the Global 3 Circuit Track system, with a revolutionary hinge design. This fitting excels as a result of its ingenious design which has been refined to the very last detail.



Vita Track



LED	12W
Lumens	1140 lm (3000K) 1180 lm (4000K)



Finishes	 Powder Coated Black
	 Powder Coated White

Revolutionary Hinge Design

The Vita Track features a revolutionary hinge design, allowing up to a 90° tilt and 350° rotation, all in one smooth motion.

90° Tilt



350° Rotation



Interchangeable Magnetic Snap-Lock Fascia

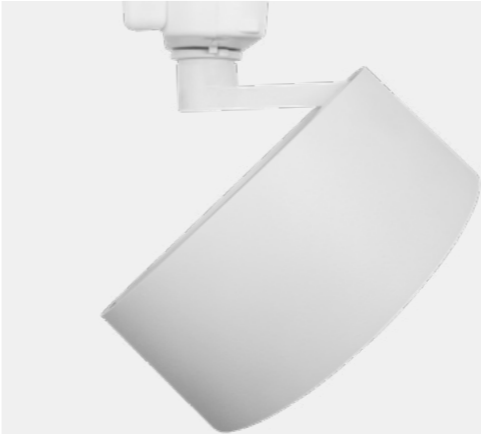
The Vita Track's magnetic snap-lock fascia is available in 3 finishes, this allows for customisation to complement any interior space.



- Fascia Finishes
- Powder Coated Black
 - Powder Coated White
 - Powder Coated Gold

Circular Track Design

The Vita Track is the perfect choice if you are looking for a circular design. With its minimal profile, it will fit seamlessly into any lighting project.



Refined Reflector

The Vita Track operates with an advanced reflector that produces the best quality light.



Specially Designed Circular Driver

The Vita Track showcases a unique phase-cut dimmable, circular driver with a power factor of 0.95. Specially designed for the Vita's circular structure, this allows a slimmer design.



High Lumen Output

The Vita Track provides a minimum output of 1140 lumens.

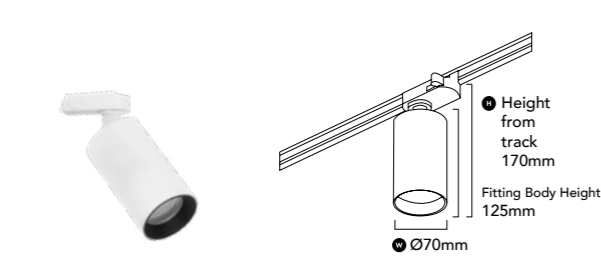


Slim and Modern Profile

The Vita has been designed to complement any modern space. With clean lines, a refined finish and minimalistic profile, the Vita Track is an ideal accent lighting solution.

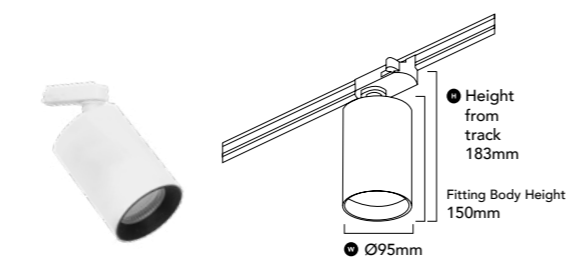


Track Collection Specifications



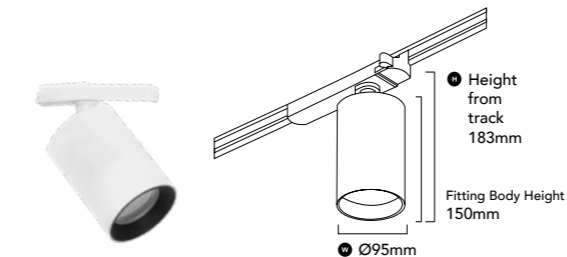
Core 70 Track	
Product Code	
White, 3000K, 60°	118-COTS15W603
White, 4000K, 60°	118-COTS15W604
Black, 3000K, 60°	118-COTS15B603
Black, 4000K, 60°	118-COTS15B604
General Specifications	
LED	15W
Lumens	1300 lm (3000K) 1420 lm (4000K)
Efficacy	86 lm/w (3000K) 94 lm/w (4000K)
Colour	3000K, Warm White 4000K, Cool White
Material	Powder Coated Aluminium
Finish	White Black
Beam	15° 24° 36° 60°
CRI	92+
IP	20
Colour Deviation	SDCM ≤2
UGR	<16
Lifetime	>55,000hrs L80B10
Warranty	5 Years
Accessories	
15° Reflector	118-RFLC7015
24° Reflector	118-RFLC7024
36° Reflector	118-RFLC7036
Black Baffle	118-COR70BB
White Baffle	118-COR70BW
Gold Baffle	118-COR70BG
Honeycomb Lens, Black Baffle	118-COR70HB
Honeycomb Lens, White Baffle	118-COR70HW
Honeycomb Lens, Gold Baffle	118-COR70HG
Driver Specifications	
Power	350mA 240V Built-in Dimmable Driver
Dimming	Phase Cut Dimming
Power Factor	> 0.95

Compatible with remote Casambi CBU-TED Bluetooth Controllable Dimmer (71-CASCBU)

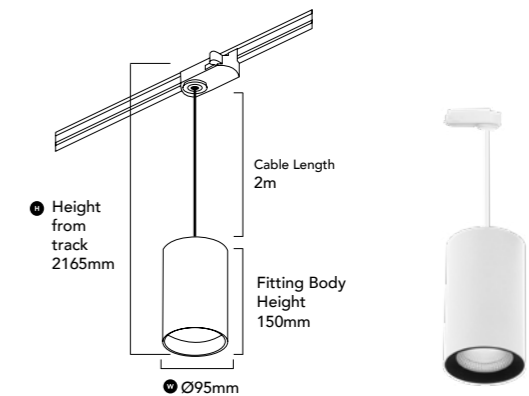


Core 95 Track	
Product Code	
White, 3000K, 60°	118-COTM20W603
White, 4000K, 60°	118-COTM20W604
Black, 3000K, 60°	118-COTM20B603
Black, 4000K, 60°	118-COTM20B604
General Specifications	
LED	20W
Lumens	1850 lm (3000K) 1920 lm (4000K)
Efficacy	92 lm/w (3000K) 96 lm/w (4000K)
Colour	3000K, Warm White 4000K, Cool White
Material	Powder Coated Aluminium
Finish	White Black
Beam	15° 24° 36° 60°
CRI	92+
IP	20
Colour Deviation	SDCM ≤2
UGR	<17
Lifetime	>55,000hrs L80B10
Warranty	5 Years
Accessories	
15° Reflector	118-RFLC9515
24° Reflector	118-RFLC9524
36° Reflector	118-RFLC9536
Black Baffle	118-COR95BB
White Baffle	118-COR95BW
Gold Baffle	118-COR95BG
Honeycomb Lens, Black Baffle	118-COR95HB
Honeycomb Lens, White Baffle	118-COR95HW
Honeycomb Lens, Gold Baffle	118-COR95HG
Driver Specifications	
Power	500mA 240V Built-in Dimmable Driver
Dimming	Phase Cut Dimming
Power Factor	> 0.95

Compatible with remote Casambi CBU-TED Bluetooth Controllable Dimmer (71-CASCBU)



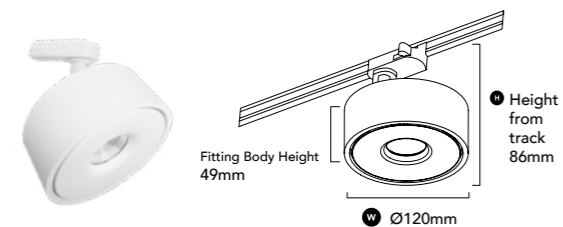
Core 95 Plus track	
Product Code	
White, 3000K, 60°	118-COTP30W603
White, 4000K, 60°	118-COTP30W604
Black, 3000K, 60°	118-COTP30B603
Black, 4000K, 60°	118-COTP30B604
General Specifications	
LED	30W
Lumens	2700 lm (3000K) 2830 lm (4000K)
Efficacy	90 lm/w (3000K) 94 lm/w (4000K)
Colour	3000K, Warm White 4000K, Cool White
Material	Powder Coated Aluminium
Finish	White Black
Beam	15° 24° 36° 60°
CRI	92+
IP	20
Colour Deviation	SDCM ≤2
UGR	<19
Lifetime	>55,000hrs L80B10
Warranty	5 Years
Accessories	
15° Reflector	118-RFLC9515
24° Reflector	118-RFLC9524
36° Reflector	118-RFLC9536
Black Baffle	118-COR95BB
White Baffle	118-COR95BW
Gold Baffle	118-COR95BG
Honeycomb Lens, Black Baffle	118-COR95HB
Honeycomb Lens, White Baffle	118-COR95HW
Honeycomb Lens, Gold Baffle	118-COR95HG
Driver Specifications	
Power	500mA 240V Built-in Track Driver
Dimming	Non Dimmable
Power Factor	>0.90



Core Suspension Track	
Product Code	
White, 3000K, 60°	118-COST12W603
White, 4000K, 60°	118-COST12W604
Black, 3000K, 60°	118-COST12B603
Black, 4000K, 60°	118-COST12B604
General Specifications	
LED	12W
Lumens	1015 lm (3000K) 1090 lm (4000K)
Efficacy	75 lm/w (3000K) 81 lm/w (4000K)
Colour	3000K, Warm White 4000K, Cool White
Material	Powder Coated Aluminium
Finish	White Black
Beam	36° 60°
CRI	92+
IP	20
Colour Deviation	SDCM ≤2
UGR	<17
Lifetime	>55,000hrs L80B10
Warranty	5 Years
Cable Length	2m
Accessories	
36° Reflector	118-RFLCOR36
Black Baffle	118-CORBB
White Baffle	118-CORBW
Gold Baffle	118-CORBG
Driver Specifications	
Power	300mA 240V Built-in Dimmable Driver
Dimming	Phase Cut Dimming
Power Factor	> 0.95

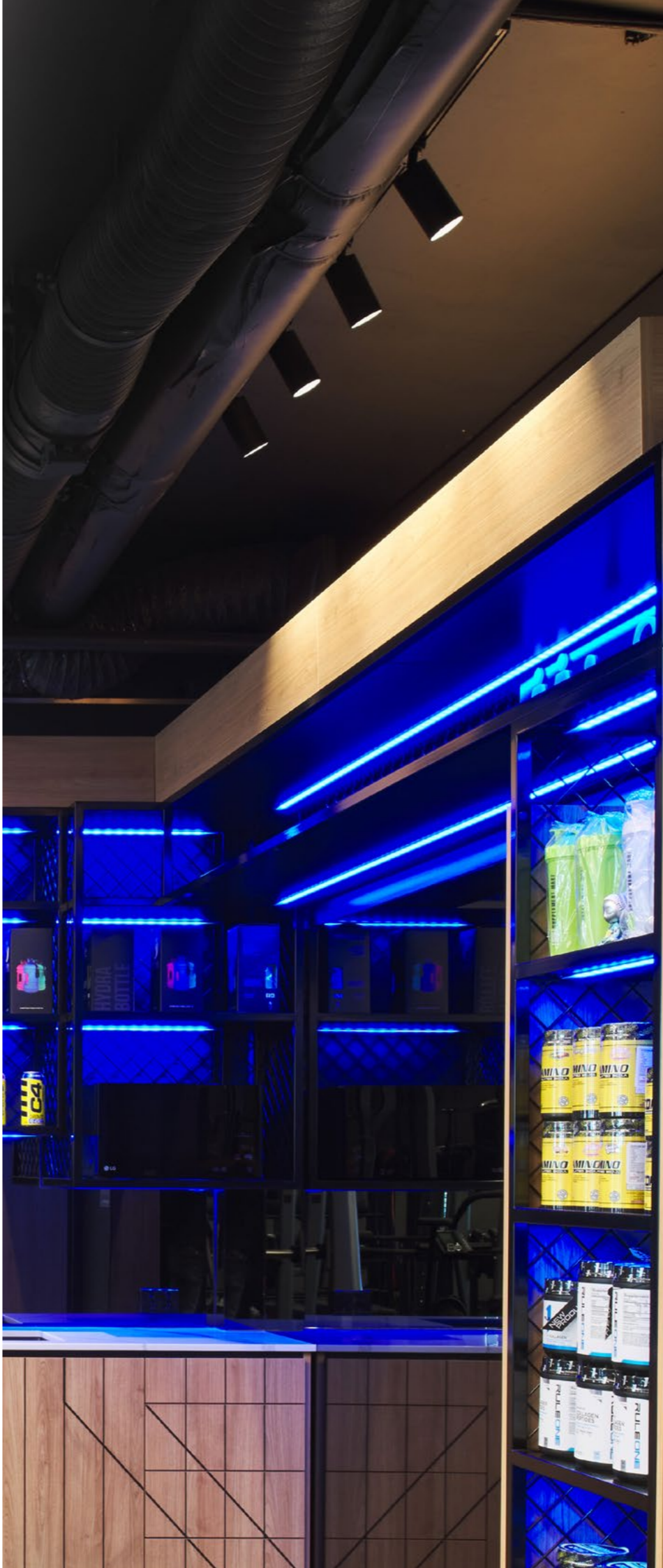
Compatible with remote Casambi CBU-TED Bluetooth Controllable Dimmer (71-CASCBU)





Vita Track	
Product Code	
White, 3000K, 50°	83-VITAT12W503
White, 4000K, 50°	83-VITAT12W504
Black, 3000K, 50°	83-VITAT12B503
Black, 4000K, 50°	83-VITAT12B504
General Specifications	
LED	12W
Lumens	1140 lm (3000K) 1180 lm (4000K)
Efficacy	95 lm/w (3000K) 98 lm/w (4000K)
Colour	3000K, Warm White 4000K, Cool White
Material	Powder Coated Aluminium
Finish	White Black
Beam	25° 36° 52°
CRI	90+
IP	20
Colour Deviation	SDCM ≤3
Lifetime	>55,000hrs L80B10
UGR	<19
Warranty	5 Years
Accessories	
25° Reflector	83-RFL25
36° Reflector	83-RFL36
Black Fascia	83-VITABLACK
Gold Fascia	83-VITAGOLD
White Fascia	83-VITAWHITE
Driver Specifications	
Power	350mA 240V Built-in Driver
Dimming	Phase Cut Dimming
Power Factor	> 0.95

Compatible with remote Casambi CBU-TED Bluetooth Controllable Dimmer (71-CASCBU)



2021/22
TRACK
COLLECTION

1300 438 609

Radiant Lighting
10 Gibberd Road
Balcatta W.A 6021

www.faze.com.au

Please note specifications are
subject to change.

Please refer to our website for
current specifications.

Edition 31.3.21

© Copyright 2021 Radiant Lighting
Pty Ltd. All rights reserved.

