



prop ceiling system™



Modularity

The Prop panel is a perforated steel unit, which can be combined in numerous combinations to create a wide variety of arrangements.

The strength of Prop panels lies in their ability to be endlessly combined into a modular ceiling system.

Scalability

Prop panels aren't limited to large spaces. Single or sparse installations can accentuate any space. A single Prop panel measures 4 feet wide and weighs 6 to 24 pounds depending on the inserts used.

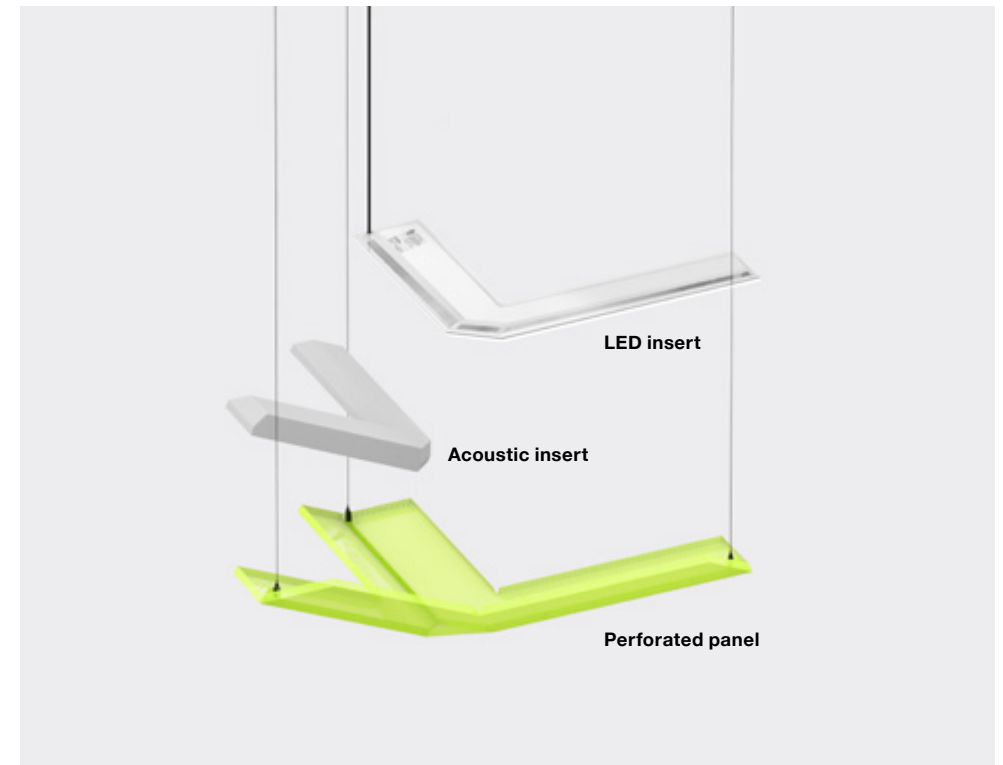


Installation in Palo Alto, CA

Lighting and acoustics

Two optional inserts are available, to address the lighting and acoustic needs of a space. The first is a lighting insert, a thin LED panel specially fabricated to fit within a Prop. These evenly distribute light and may be synced with building daylight sensors for site-specific dimming.

The second is an acoustic foam insert that helps to dampen ambient noise.



LED insert

2700-3500K
20W
815 lumen
6lbs

Acoustic insert

Melamine foam
Class A per ASTM E 84
SAA .97, NRC 1.00
1lb

Perforated panel

Powder-coated steel
46% opacity
RAL colors available
6lbs





Installation in Seattle, WA



Installation in Seattle, WA



Building systems integration



HVAC

The panels have an opacity of 46%, allowing air to circulate through the membrane of the Prop ceiling system. Prop panels may be hung below HVAC ducts at a single height, or in separate clouds to allow for varying heights. We can also accommodate specific needs for your space.



Sprinklers

Prop panels have a triangular hole at the center that is 4 inches in diameter at its smallest point. This allows most sprinkler heads to be positioned through these holes. The Prop panel's 46% opacity allows water from above-system sprinklers to fall through. We can also accommodate specific sprinkler or fire-related needs for your space.

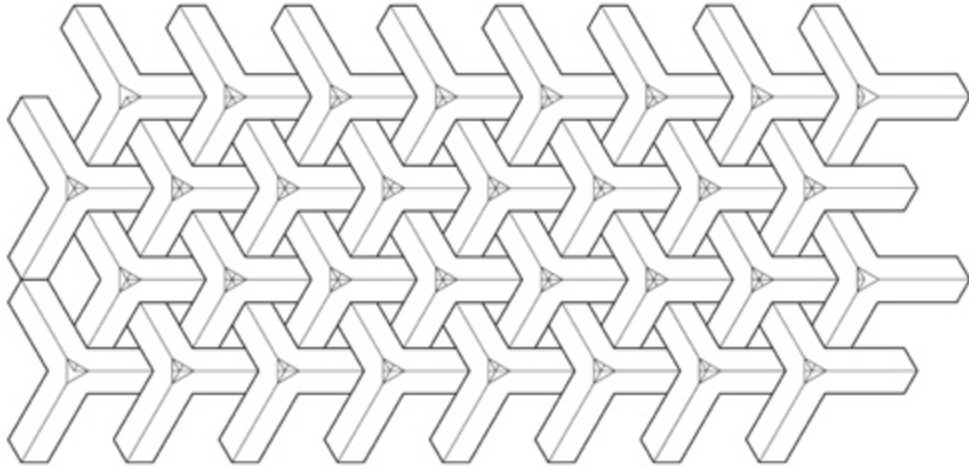


Lighting controls

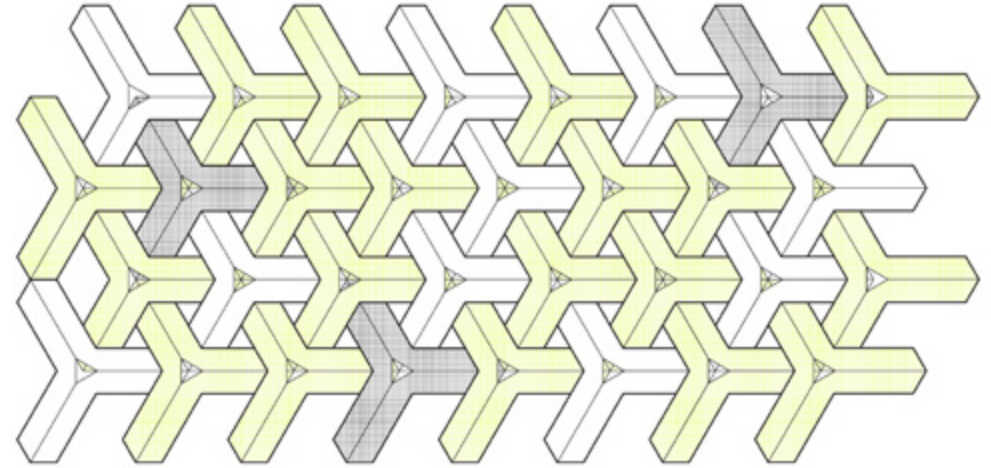
The Prop light panels can easily be integrated into building lighting control systems. For example, by using a 0-10V dimming module, we can tie into your building's daylight harvesting system to take advantage of things like daylight dimming to continuously adjust the light levels in proportion to the amount of sunlight available.

Color variations

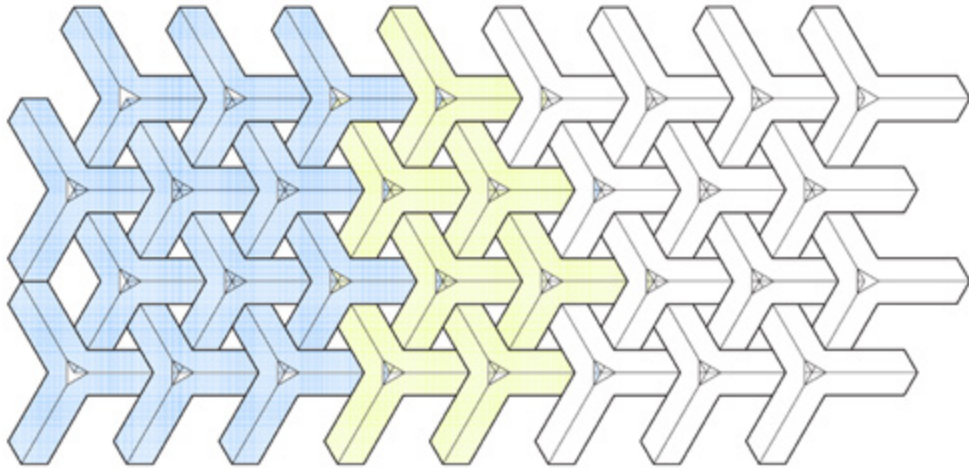
The sky's the limit when deciding the perfect color variation for your project. Work directly with our in-house designers to explore options or send us a specific Pantone shade to match.



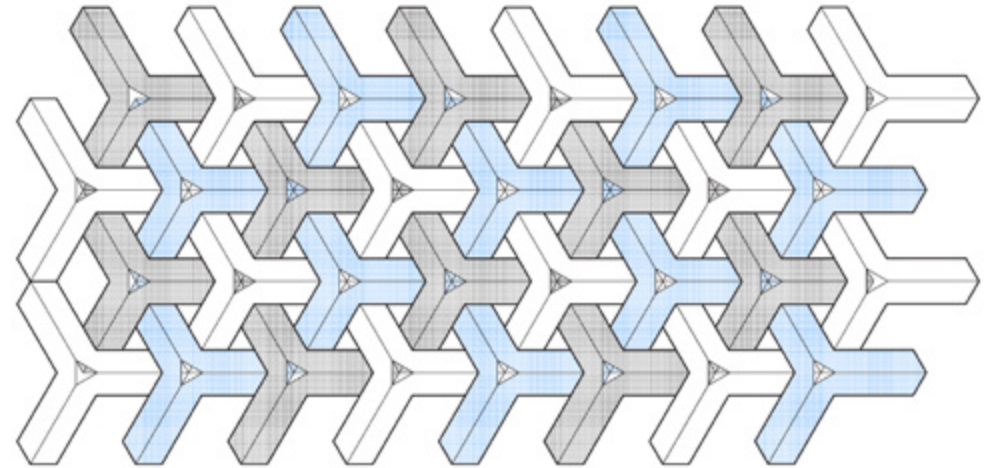
Single color



Sparse accents



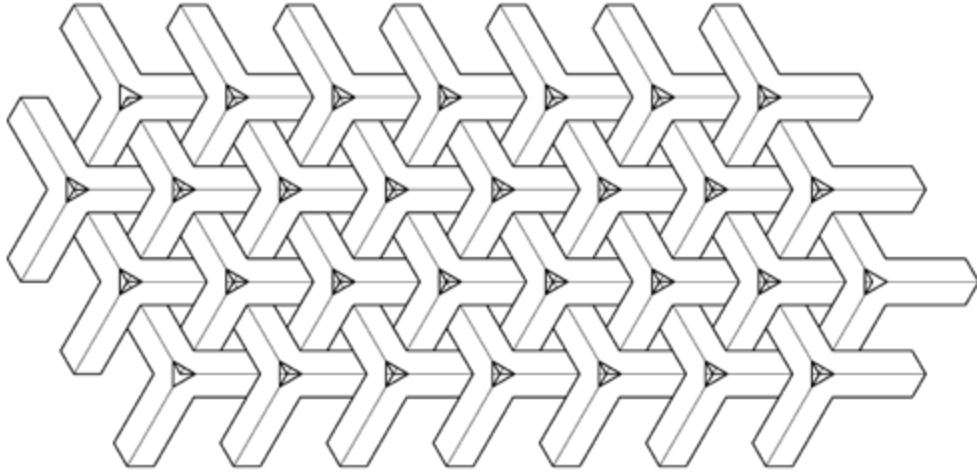
Color gradient



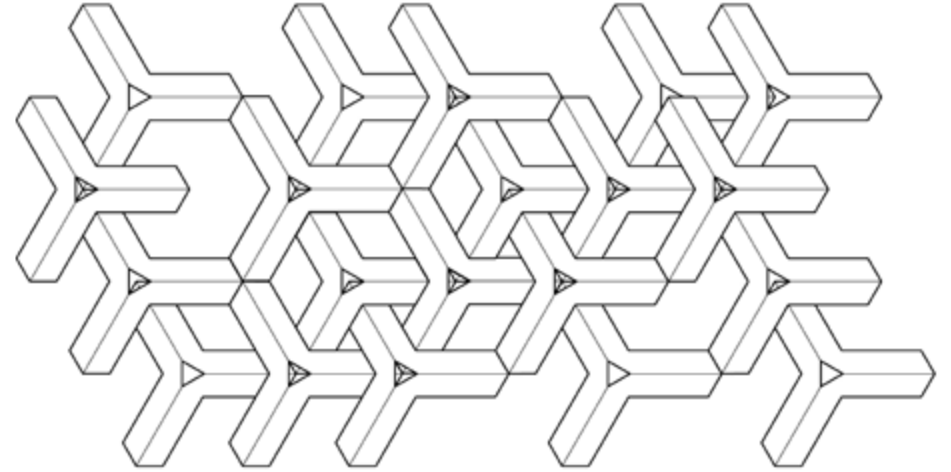
3-color pattern

Density

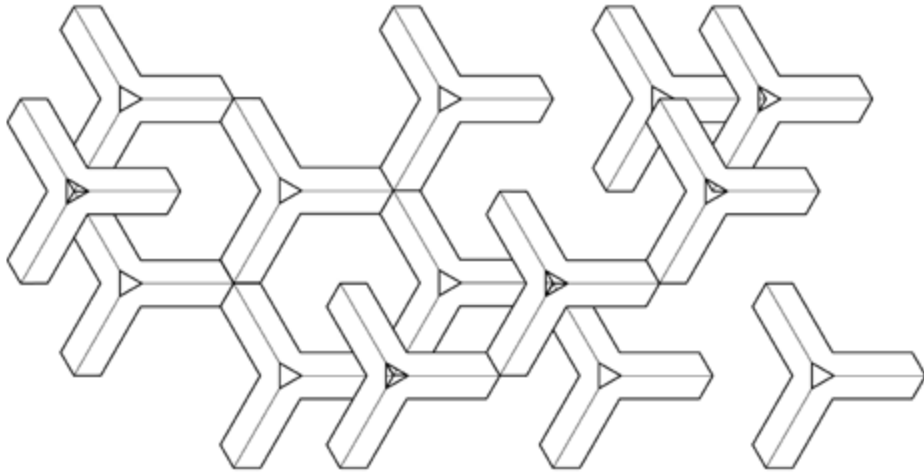
Each panel can be hung individually or joined with others. This modularity allows arrangements to be as dense or sparse as desired, giving you the flexibility to design based on your budget.



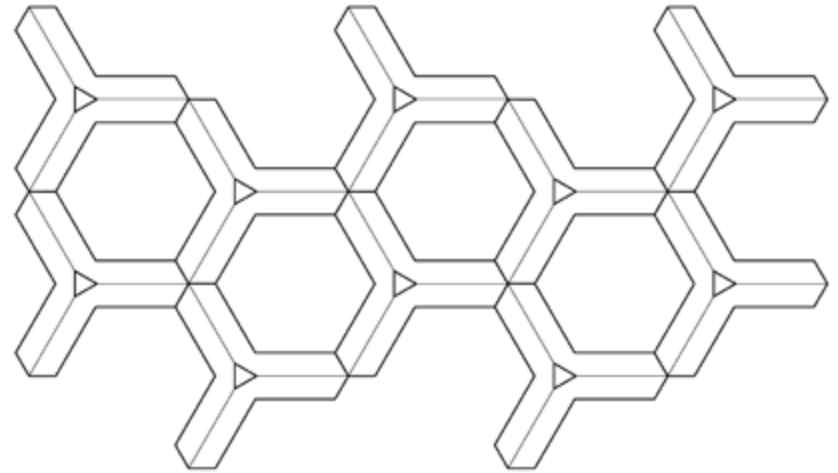
Full density



Medium density



Sparse density

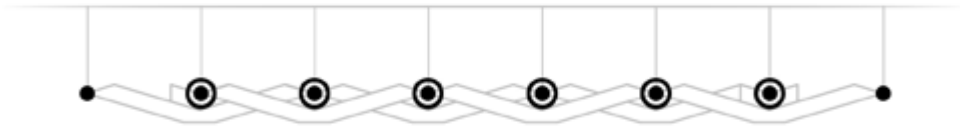


Evenly sparse density

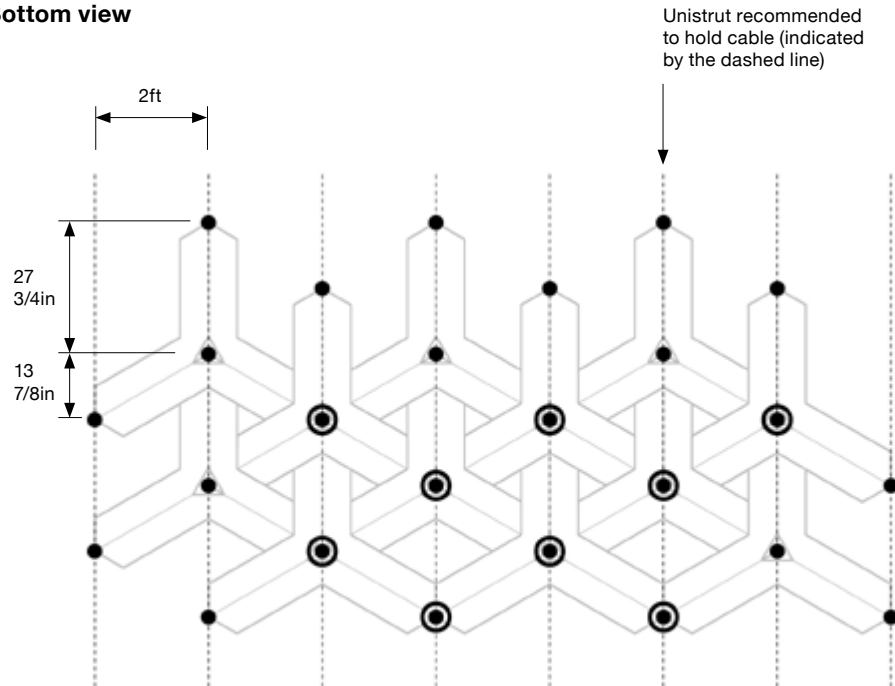
Installation

Before installing Prop panels, ceiling mounts for 1/16in steel cable must be installed. We recommend that you install unistrut to hold the cables as it makes for easier error compensation when installing.

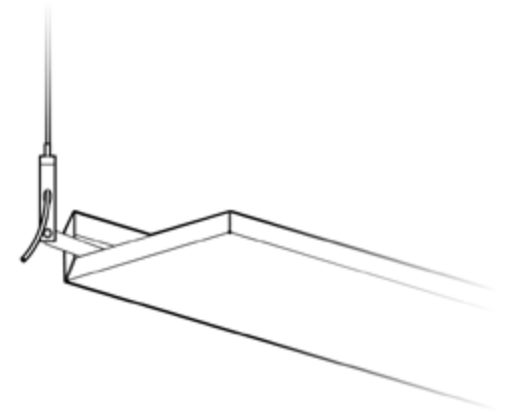
Side view



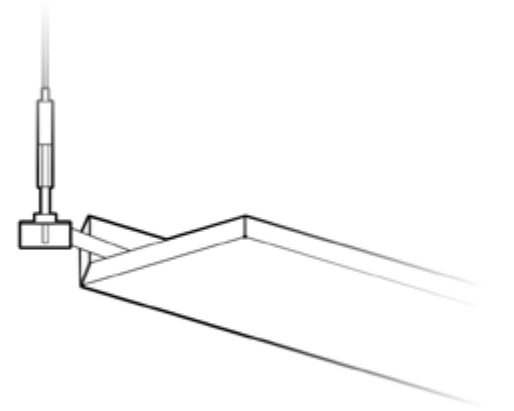
Bottom view



● Single mount



⊙ Multi mount



DIY or let us help

If you would like to work out a solution yourself, we can provide a digital kit of parts to help you plan your ceiling system. We also love custom projects and would be happy to design a layout tailored specifically for your space. We will work with designers, contractors and subcontractors to ensure lighting, air circulation, and acoustic needs are met.

Graypants Seattle

3220 1st. Ave. S. Suite 400
Seattle, WA 98134
(206) 420-3912
seattle@graypants.com

