



## Linear Lighting

Linear lighting provides a functional and minimalist style to any project. They can be suspended from the ceiling or surface mounted, making them a great design solution for work benches or kitchen islands. Our collection of linear lights are available in a number of different lengths and combinations, making them perfectly versatile for commercial projects, as well as for the family home.



## Line Opal series

The LINE OPAL series are as practical as they are stylish. With numerous mounting and style options, they provide flexibility across both residential and commercial projects.



Line Opal

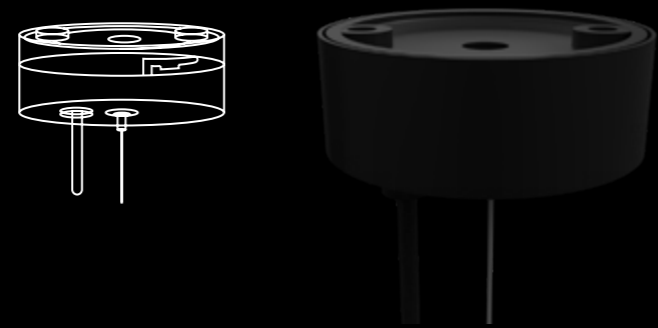


Line Opal Recessed

# Line Opal

## Neat canopy installation

The LINE OPAL canopy is easy to install, with just half a twist locking it into the ceiling. There are no visible screws and one of the wire suspensions is mounted through the canopy itself; resulting in a much neater finished product.



## Glare reduction

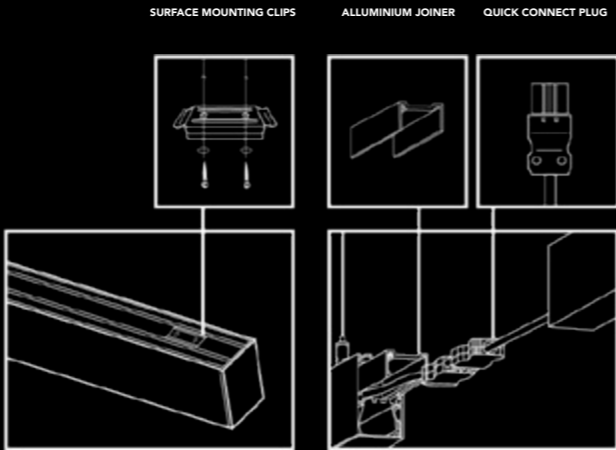
The LINE OPAL incorporates a deep set LED heat sink and special opal diffuser, these combined give it a UGR of less than 22; therefore reducing glare and creating visual comfort.



## Quick connection system

Our specially designed aluminium joiner is made to fit perfectly between any required lengths and provide super strong support, resulting in seamless joins and a flawless visual alignment.

The LINE OPAL also features quick connection plugs and surface mounting clips for ease of installation.



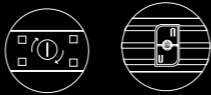
### Flicker free dimming

Built-in phase cut flicker free dimming.



### Quick snap-lock connections

This series features a quick snap-lock kit for the surface mount and suspension options.

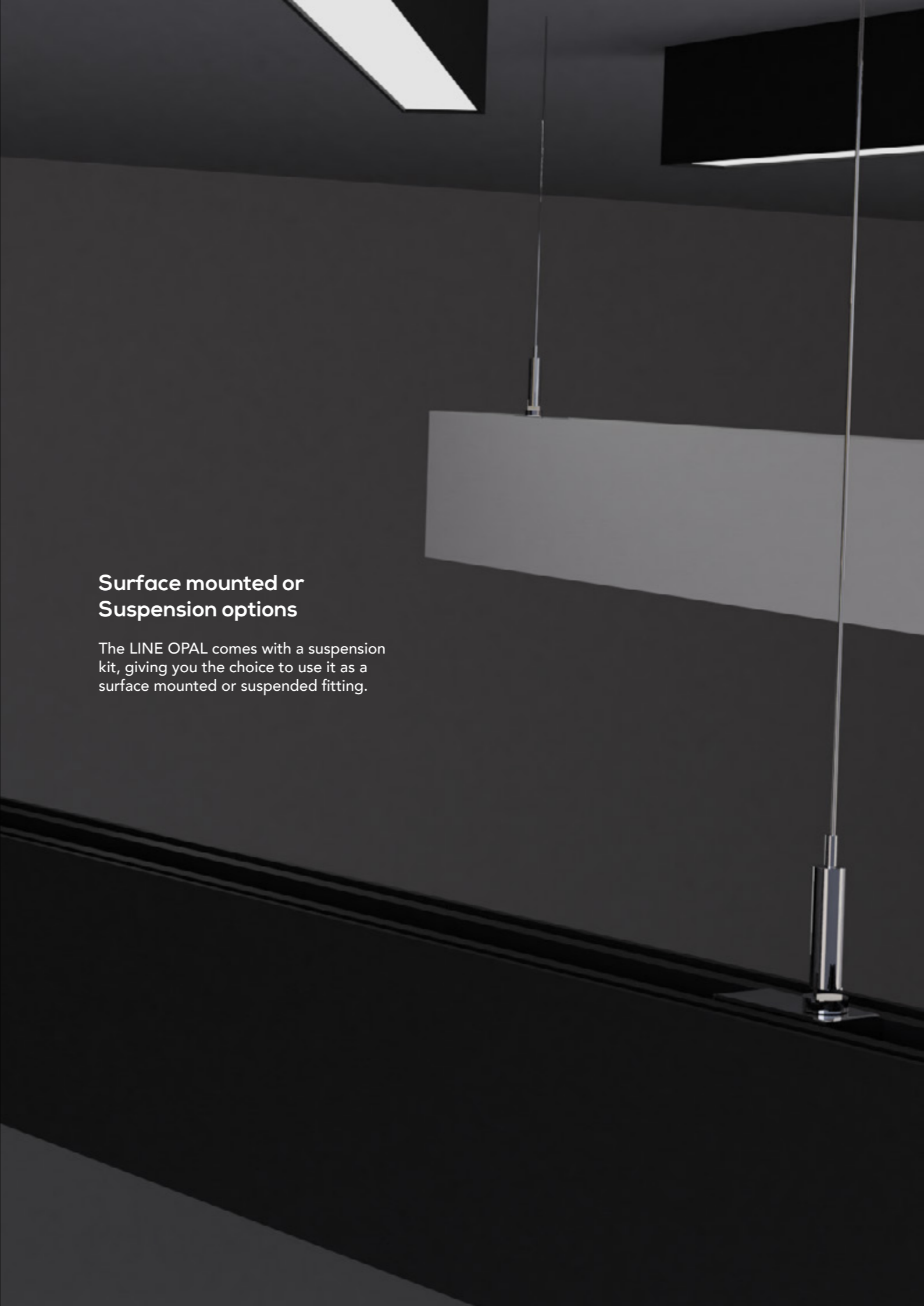


### Easy and quick assembly/ dismantling

Simple rotary fixation and dismantling with a screwdriver.

## Surface mounted or Suspension options

The LINE OPAL comes with a suspension kit, giving you the choice to use it as a surface mounted or suspended fitting.



# Line Opal Recessed

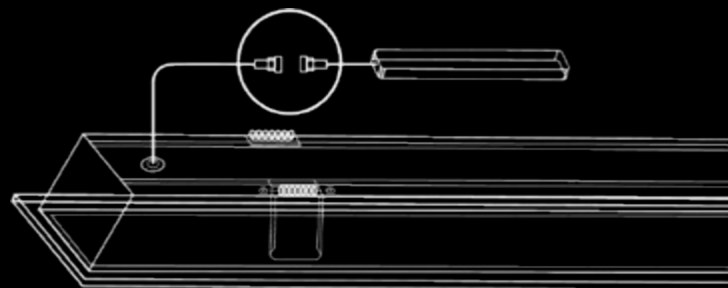
## Seamless light

With a slim profile design, the LINE OPAL RECESSED provides seamless, clean light.



## Glare reduction

The LINE OPAL RECESSED incorporates a deep set LED heat sink and special opal diffuser. These combined, give it a UGR of less than 22; therefore reducing glare and creating visual comfort.



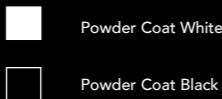
## Quick connection system

Using a quick connect coupler plug, the LINE OPAL RECESSED has a fast and efficient connection to its external flicker free dimmable driver.



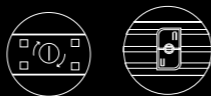
### Flicker free dimmable driver

Features a driver that is phase cut flicker free dimming.



### Available in two finishes

High quality materials for strength and durability.



### Easy and quick assembly/ dismantling

Simple rotary fixation and dismantling with a screwdriver.

