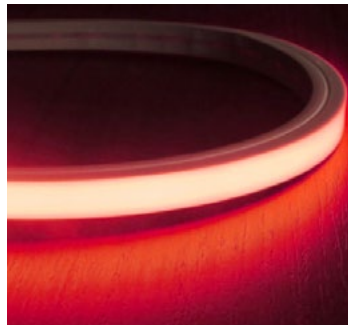


PROJECT:

TYPE:

NOTES:



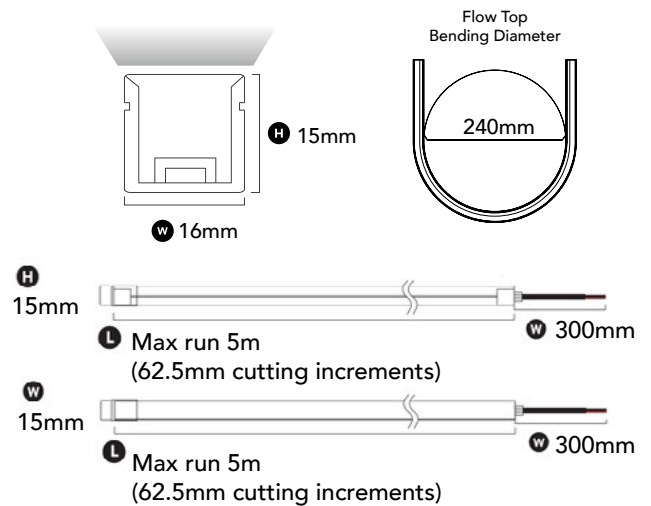
Our FAZE FLOW TOP is a high quality, flexible extruded silicone strip. It is ideal for use along ceilings, walls, cabinetry & stairways; both indoors and outdoors. This strip will ensure a seamless combination of style and functionality to any project!

FEATURES

- + Top emitting light direction, for applications
- + UV & chemical resistant
- + Precise cutting options
- + RGB and White colour tuning
- + Compatible with Casambi devices
- + IP67 - suitable for outdoor applications
- + Front, side and bottom cable entry connection



DIMENSIONS (mm)



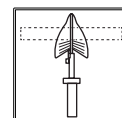
GENERAL SPECIFICATIONS

LED	15W p/m
Lumens	426 lm
Colour	RGBW
Efficacy	56 lm/w
Beam	120°
Material	Extruded Silicone
CRI	92+
Finish	White
IP	67
Colour Deviation	SDCM<2
Lifetime	>54,000hrs L70B10
Warranty	5 Years
Voltage	DC 24V

PRODUCT CODE

RGBW **10-FL1615TRGBW**

CUTTING LENGTHS



62.5mm increments up until 5m

*Please allow 9mm extra on each side for the end caps

COMPATIBLE CASAMBI DEVICES

BasicDIM Driver 24V 150W	71-CAS24V150
BasicDIM Driver 24V 100W	71-CAS24V100
BasicDIM Driver 24V 60W	71-CAS24V60
BasicDIM Driver 24V 35W	71-CAS24V35

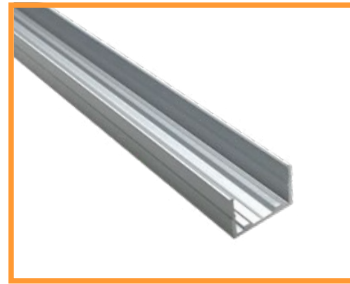


FLOW TOP ACCESSORIES



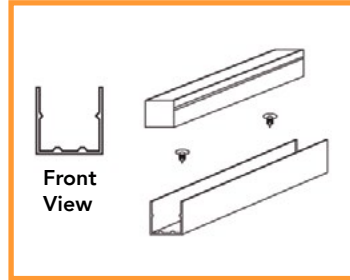
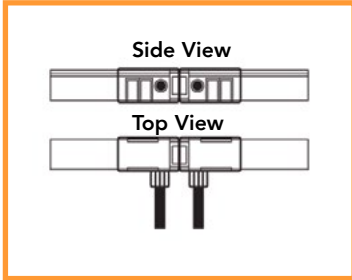
SIDE CABLE ENTRY

Code 10-FL1615RGBWPSE
Dimensions 27.9 (L) x 20.4 (W) x 19.4 (H) mm
Finish Transparent
Cable Entry Side



ALUMINIUM PROFILE

Code 10-FL1615P1
Dimensions 1000 (L) x 20.5 (W) x 17.6 (H) mm
Material Aluminium



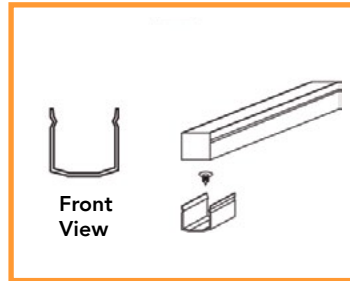
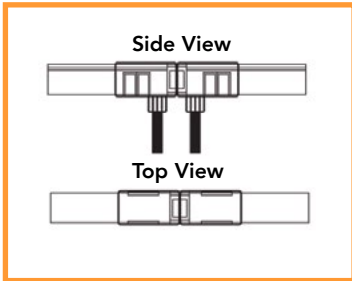
REAR CABLE ENTRY

Code 10-FL1615RGBWPRE
Dimensions 27.9 (L) x 20.4 (W) x 19.4 (H) mm
Finish Transparent
Cable Entry Bottom



MOUNTING CLIPS (set of 4)

Code 10-1615MC
Dimensions 20 (L) x 16.6 (W) x 12.4 (H) mm
Material Stainless Steel
Each meter requires 4x clips and 4x screws



STRAIGHT CABLE ENTRY

Code 10-FL1615RGBWPFE
Dimensions 27.9 (L) x 20.4 (W) x 19.4 (H) mm
Finish Transparent
Cable Entry Front



END CAP IP67

Code 10-FL1615EC
Dimensions 27.9 (L) x 20.4 (W) x 19.4 (H) mm
Material Stainless Steel

