

PROJECT:

TYPE:

NOTES:



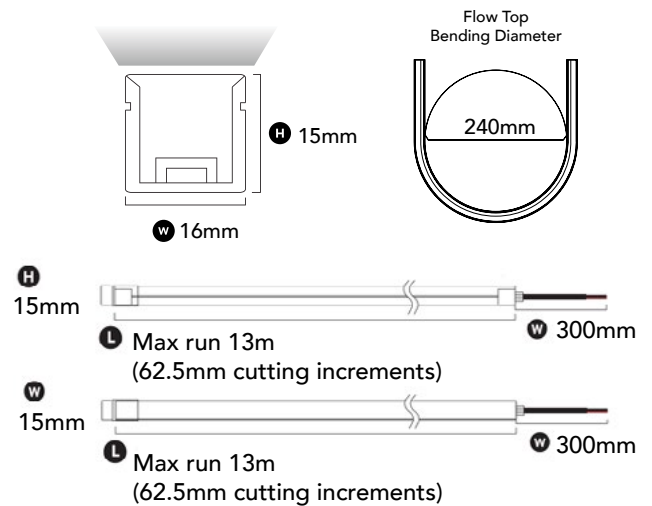
Our FAZE FLOW TOP is a high quality, flexible extruded silicone strip. It is ideal for use along ceilings, walls, cabinetry & stairways; both indoors and outdoors. This strip will ensure a seamless combination of style and functionality to any project!

## FEATURES

- + Top emitting light direction, for applications
- + UV & chemical resistant
- + Precise cutting options
- + High CRI - excellent colour rendering
- + Compatible with Casambi devices
- + IP67 - suitable for outdoor applications
- + Front, side and bottom cable entry connection



## DIMENSIONS (mm)



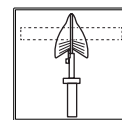
## GENERAL SPECIFICATIONS

<b>LED</b>	11W p/m
<b>Lumens</b>	264 lm
<b>Colour</b>	RGB
<b>Efficacy</b>	29.2 lm/w
<b>Beam</b>	120°
<b>Material</b>	Extruded Silicone
<b>CRI</b>	92+
<b>Finish</b>	White
<b>IP</b>	67
<b>Colour Deviation</b>	SDCM<2
<b>Lifetime</b>	>54,000hrs L70B10
<b>Warranty</b>	5 Years
<b>Voltage</b>	DC 24V

## PRODUCT CODE

RGB **10-FL1615TRGB**

## CUTTING LENGTHS



62.5mm increments up until 13m

\*Please allow 9mm extra on each side for the end caps

## COMPATIBLE CASAMBI DEVICES

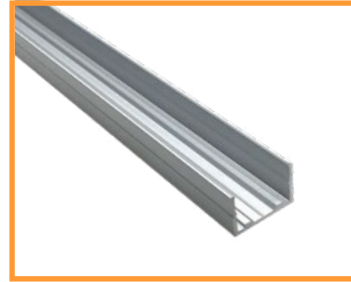
BasicDIM Driver 24V 150W	<b>71-CAS24V150</b>
BasicDIM Driver 24V 100W	<b>71-CAS24V100</b>
BasicDIM Driver 24V 60W	<b>71-CAS24V60</b>
BasicDIM Driver 24V 35W	<b>71-CAS24V35</b>

# FLOW TOP ACCESSORIES



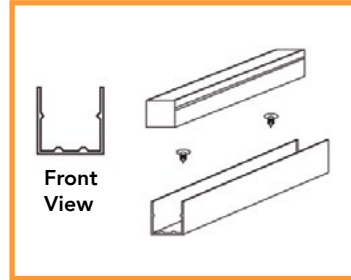
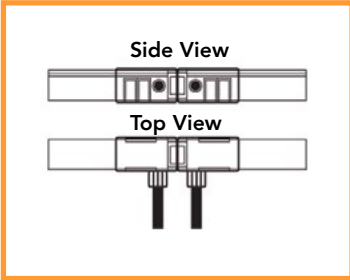
## SIDE CABLE ENTRY

**Code** 10-FL1615RGPSE  
**Dimensions** 27.9 (L) x 20.4 (W) x 19.4 (H) mm  
**Finish** Transparent  
**Cable Entry** Side



## ALUMINIUM PROFILE

**Code** 10-FL1615P1  
**Dimensions** 1000 (L) x 20.5 (W) x 17.6 (H) mm  
**Material** Aluminium



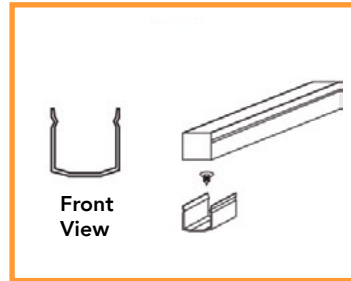
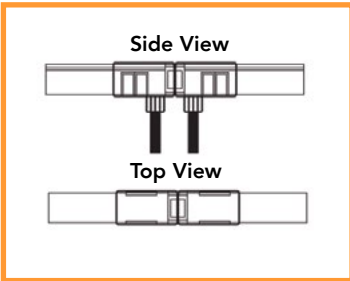
## REAR CABLE ENTRY

**Code** 10-FL1615RGPPE  
**Dimensions** 27.9 (L) x 20.4 (W) x 19.4 (H) mm  
**Finish** Transparent  
**Cable Entry** Bottom



## MOUNTING CLIPS (set of 4)

**Code** 10-1615MC  
**Dimensions** 20 (L) x 16.6 (W) x 12.4 (H) mm  
**Material** Stainless Steel  
*Each meter requires 4x clips and 4x screws*



## STRAIGHT CABLE ENTRY

**Code** 10-FL1615RGPPE  
**Dimensions** 27.9 (L) x 20.4 (W) x 19.4 (H) mm  
**Finish** Transparent  
**Cable Entry** Front



## END CAP IP67

**Code** 10-FL1615EC  
**Dimensions** 27.9 (L) x 20.4 (W) x 19.4 (H) mm  
**Material** Stainless Steel

