

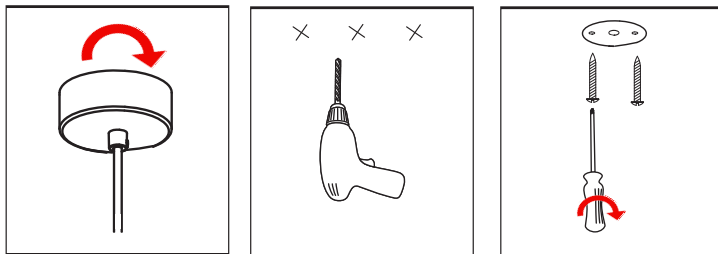
⚠ CAUTION - light fitting must be installed by a licensed electrician.

- Please ensure to read instructions correctly for the installation of the fitting provided. Failure to do so will result in a void of warranty and compromises the safety of luminaire.
- Radiant Lighting are not liable for warranties when luminaire is damaged by incorrect installation. The installation of the luminaires must be in accordance with the national safety regulations.

Please refer to Radiant Lighting's General Terms & Conditions for more information concerning the installation and warranty of our products.

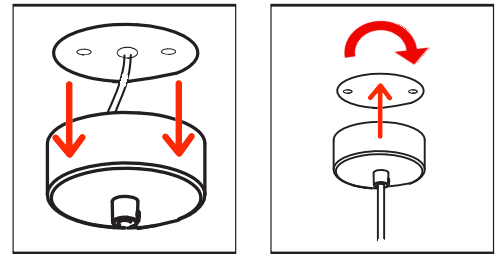
Suspension Instructions

STEP 1



- 1 a) Half twist canopy open
- b) Drill two holes into ceiling for mounting and one for cables
- c) Screw the base plate into the ceiling

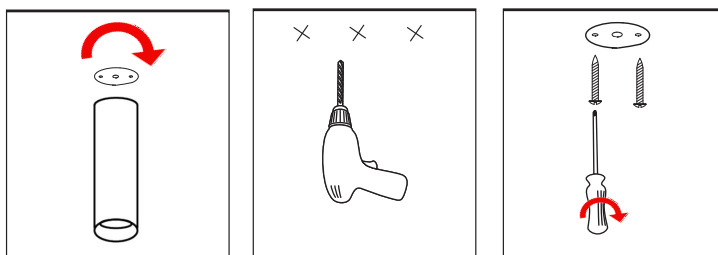
STEP 2



- 2 a) Pull cable through the ceiling mount and connect to fitting cables.
- b) Half turn twist the canopy into the base plate in the ceiling

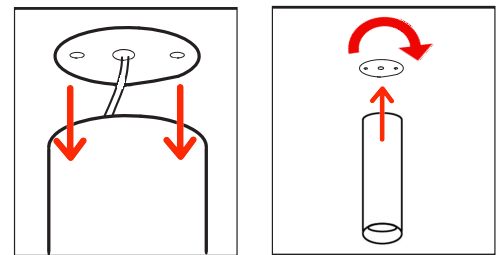
Surface Mount Instructions

STEP 1



- 1 a) Half twist base plate open from fitting
- b) Drill two holes into ceiling for mounting and one for cables
- c) Screw base plate into ceiling

STEP 2



- 2 a) Pull cable through the ceiling mount and connect to fitting cables.
- b) Half turn twist the fitting to the base plate in the ceiling.

Category	6W / 12W	CRI	92+
Power	Ceiling / Suspension	Material	Powder Coat Aluminium
IP Rating	20	Warranty	5 Years



For warranty information please visit radiantlighting.com.au/warranty

For all other queries, please call us on 1300 438 609