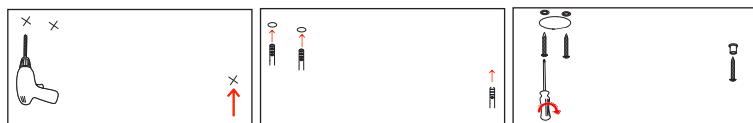
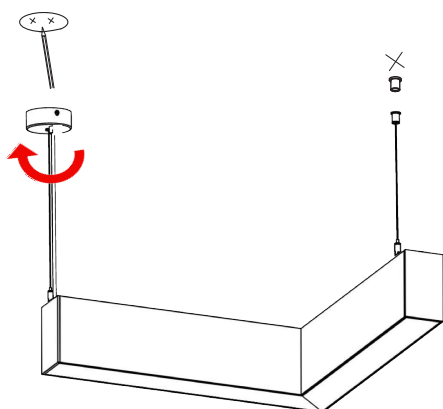


⚠ CAUTION - light fitting must be installed by a licensed electrician.

- Please ensure to read instructions correctly for the installation of the fitting provided. Failure to do so will result in a void of warranty and compromises the safety of luminaire.
- Radiant Lighting are not liable for warranties when luminaire is damaged by incorrect installation. The installation of the luminaires must be in accordance with the national safety regulations.

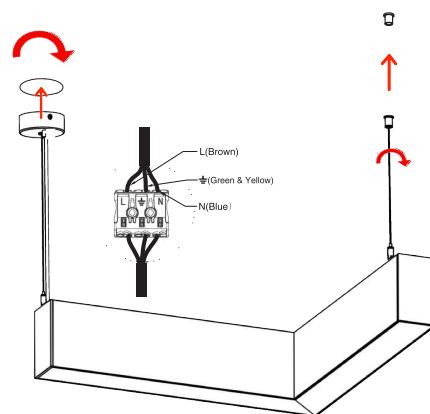
Please refer to Radiant Lighting's General Terms & Conditions for more information concerning the installation and warranty of our products.

Installation Instructions - Suspension



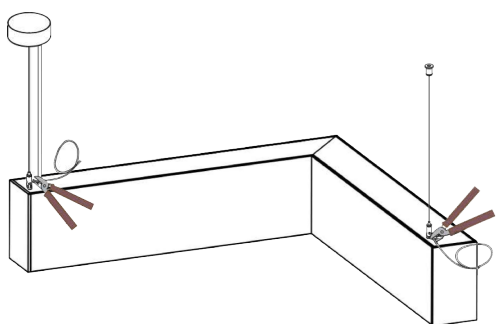
STEP 1

Half twist canopy open and secure base into the ceiling.
Fix suspension cable to luminaire & canopy base.



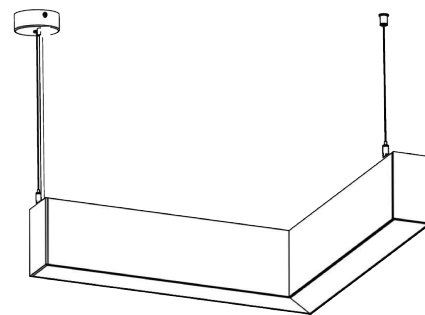
STEP 2

Attach canopy to base plate by half twisting in then opposite direction and ensure it is secured tightly.



STEP 3

Adjust suspension height to desired length and cut off any excess cabling. (Max cable length 2m)



STEP 4

Category	Ceiling / Suspension	CRI	90+
Power	15W	Material	Aluminium
IP Rating	40	Warranty	5 Years



For warranty information please visit [radiantlighting.com.au/warranty](https://www.radiantlighting.com.au/warranty)

For all other queries, please call us on **1300 438 609**